



JOHN DEERE



JOHN DEERE
C&F TECH



BUILD YOUR FUTURE

Linn-Benton
COMMUNITY COLLEGE
Albany, Oregon

COASTLINE
Equipment

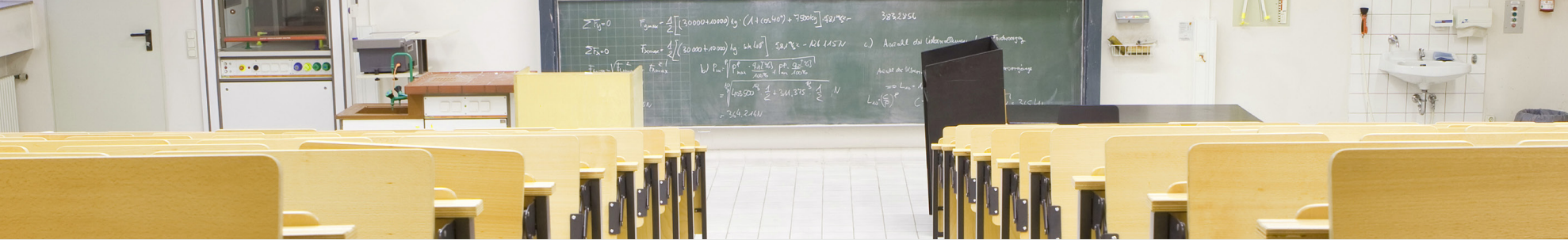


TABLE OF CONTENTS

3

Program Information

Program Contact Information

11

4 - 5

Letter from Mr. Alvin

Area Map

12

6 - 8

Course Description

Housing Options

13 - 16

9

Textbooks by Term and Cost

Application

18 - 19

10

Tool Vouchers

Agreement

20 - 21

11

Learning Outcomes



Demand is High

PROGRAM INFORMATION

WELCOME LETTER

From Linn Benton

The Construction and Forestry Technology Program is a two-year program leading to an Associate of Applied Science degree. The program develops the technical competency and professional attributes of students to prepare graduates for high-paying and rewarding careers as a John Deere construction and forestry equipment technician.

The program begins fall quarter of each year. The total program is designed to be completed in seven quarters. Each specialized subject is studied in the classroom and laboratory on campus. Cooperative Work Experience is also included in the curriculum. Students are selected to participate in the Construction and Forestry Equipment Technology program through an interview process with a sponsor John Deere Construction and Forestry Equipment Dealership. Selected students will receive assistance with tuition and books from the sponsor dealership.



Program Requirements

Students must meet or exceed the following placement scores to enter the Construction and Forestry Equipment Technology Program

1. Writing
2. Math
3. Alt. Safe Replacement

Facilities

The program is conducted in modern, well-equipped classrooms and laboratory/shops. The 25,000- square-foot Heavy Equipment Mechanics/ Diesel facility houses a dynamometer and heavy-duty engine rebuilding lab. Students also have a large area where they can work on construction and forestry equipment and components.

Hello to all entering John Deere Construction and Forestry students from Coastline Equipment.

I am reaching out to you today to help streamline your entrance into the Linn-Benton Community College John Deere Construction Forestry Program.

I am John Alvin, the Chair of our program and I would like to welcome you to the beginning of a rewarding journey. This will be a journey that will require efforts, "but there is no great reward without first a road traveled and a journey made". My faculty and I will be here to guide you through this voyage.

Step 1: Apply to be a full-time Student at Linn-Benton Community College

Follow the directions in the links below.

<https://www.linnbenton.edu/hed>

Step 2: Test

Take school placement tests. (See page 3)

Step 3: Go through the On-line Orientation

This step fully activates you in our school's computer system.

Failure to complete the orientation allows you to register for part-time only. *(Eight credits or less)*

Step 4: Find your student ID Number and store it in a safe place.

Reset Web Runner password.

Step 5: Meet with an Advisor (Myself, I do all the C&F advising)

To make an advising appointments this summer e-mail me at alvinjo@linnbenton.edu to set up an appointment. Appointments start at 8:00 am.

In extreme circumstances, for example if you are in Southern California and you cannot come to the campus for an advising session, any issues that cannot be handled in person or via e-mail can be worked out in the week before school starts. Rest assured that your seat are allocated and will not be inadvertently filled.

COURSE DESCRIPTION

“Heavy Equipment Diesel Technology Program”

JOHN DEERE CONSTRUCTION & FORESTRY TECH CURRICULUM

YEAR ONE

UNIT	TITLE	CLASS	LAB	CRS.
JDCE1130	DEERE ORIENTATION	30	45	5.5

This course provides an introduction to the John Deere Product line, manuals, time management, engine classifications, and serial numbers. Warranty, shop tickets, and John Deere service department policy and procedures are explained as well as an introduction to John Deere Service Advisor and Parts Pro.

JDCE1131	DEERE FUNDAMENTALS	45	30	4.5
----------	--------------------	----	----	-----

The proper use and care of power and hand tools. Encompasses micrometers, dial indicators, torque wrenches, twist drills, taps, dies, screw extractors, thread restoration, tube fittings and fasteners. Safety, product labels, material safety data sheets, and handling of hazardous materials will be explained. Safe forklift operation will be covered.

WELD1185	DIESEL TRUCK, JDAT, JDCE PROGRAMS	10	20	1.5
----------	-----------------------------------	----	----	-----

Theory and practice of oxyacetylene braze welding and cutting including proper operation of equipment. Principles, safety procedures and application of gas metal arc welding (MIG).

JDCE1134	DEERE ELECTRICAL/ELECTRONICS I	84	36	9.0
----------	--------------------------------	----	----	-----

Basic electrical principles and applications of magnetism, electromagnetism and the safe utilization of electrical test meters are covered. The design, construction and safe operation and testing of lead acid batteries is part of this class. Principles of operation, testing and repair of ignition systems cranking systems and charging systems are included. Safety is stressed in this course.

BSAD1010	MICROSOFT APPLICATIONS I	45		4.5
----------	--------------------------	----	--	-----

Use of Windows operating system to learn about My Computer and Windows Explorer to manage folders and files. Use of a popular Internet browser to explore the World Wide Web and work with electronic mail. Use of Microsoft Office software site to learn basic features and integration of the word processing application MS Word and the spreadsheet applications MS Excel.



YEAR 2

UNIT TITLE

JDCE1340 DEERE THEORY OF ENGINE OPERATION

Study of basic physical principles, operation and construction of two and four stroke cycle engine. Ignition timing of four-stroke cycle engines to factory specifications. Basic diagnostic engine test procedures will be practiced on spark and compression ignition engines. This course also covers the types of internal combustion engine cooling systems, lubrication systems, air intake systems and exhaust systems. Safety training is included.

JDCE1341 DEERE DIESEL FUEL SYSTEMS

Operation, theory, testing and repair methods for spark ignition engine fuel systems along with normal and abnormal combustion theory. Fuel production, testing, storage, and handling are also covered. The theory of diesel fuel injection system includes the injection pump and nozzle components, fuel flow and fuel filtering systems. Maintenance procedures including proper removal, installation and timing of fuel injection pumps is also covered. Safety is stressed.

JDCE1342 DEERE ENGINE REPAIR

Basic theory, construction and operation of engine valve train and cylinder head. Valve timing and adjustments of Deere engines. Design, construction, operation and service methods for the following engine components: crankshafts, connection rods, piston assemblies, cylinder liners, bearings and related engine accessories. Crankshaft lubricants, lubrication systems and oil filtration systems. Disassembly, inspection, measurements, reassembly and adjustments performed on Deere diesel engines. Safety included.

PHYS1150 DESCRIPTIVE PHYSICS (or higher)

Conceptual survey of physics for the non-science major. Topics covered include motion, fluids, heat, electricity, magnetism, waves and optics. Emphasis will be placed on using concepts to analyze physical problems.



UNIT TITLE

JDCE1901 DEALER COOPERATIVE EDUCATION

On the job experience in a Deere construction equipment dealership. Application of skills and concepts learned in previous terms. Supervised by Southeast Community College – Milford Campus Deere Construction Equipment instructor. Safety rules/procedures are included in this course.

JDCE1133 DEERE HEATING, VENTILATION & AIR CONDITIONING

Theory, operation and repair of Deere heating, ventilation and air-condition systems. Includes proper operation of recover/recycling equipment and leak detection equipment. Retrofit procedures for converting a system from R-12 to R-134A refrigerant. Operation and repair of Climate control as used on Deere Construction and Forestry Equipment is included. Safety is stressed in this course.

JDCE1343 DEERE ELECTRICAL/ELECTRONICS II

Review of electrical fundamentals including cranking motors, alternators and ignition systems. An introduction to basic electronics is part of this course along with procedures and use of a digital multimeter in electrical circuits. Techniques of circuit diagnosis using electrical schematics. Function, operation and testing of semiconductors and transistors. Microprocessor operation, including inputs and outputs. Testing of machine circuits including lighting, accessory, instrumentation and gages. Lab projects include the repair procedures and testing of cranking motors and alternators. Safety is stressed in this course.

HEAVY EQUIPMENT DIESEL/DEERE CONSTRUCTION/FORESTRY PROGRAMS TEXTBOOKS BY TERM AND COST

FALL TERM

AUTHOR	ISBN #	TITLE	YEAR OF PROGRAM
Basic Electrical class: Hv3.297			
Bell	133949800	Modern Diesel Technology Electricity	First Year
Powertrain class: Hv3.295			
***	133693369	Modern D" T" Heavy Equipment Systems	Second Year

WINTER TERM

AUTHOR	ISBN #	TITLE	YEAR OF PROGRAM
Pneumatic breaks and controls: Hv3.146			
***	***	Text Open Source Canadian E-book	First Year
Basic Hydraulics Class: Hv3.134			
Deere/Pub	0866913718	Deere/FOS Basic Hydraulics Manual Pocket Reference	First Year
Engines class: Hv3.129			
Bennett	9781401898090	Modern D" T" Diesel Engines	Second Year

SPRING TERM

AUTHOR	ISBN #	TITLE	YEAR OF PROGRAM
Breaks and Suspensions: Hv3.132			
Bennet	1418013722	Modern D" T" Diesel Brakes/Suspension	First Year
ADVANCED Hydraulics Class: Hv3.296			
Deere/Pub	REUSED	Deere/FOS Basic Hydraulics Manual	First Year
Tune-Up Class: HV3.130			
Bennet	REUSED	Modern D" T" Diesel Engines	Second Year
Air Conditioning: HV3.303			
Dixon	1133716253	Modern D" T" Diesel/HVAC	Second Year

The students pay a \$4500 Snap-On Tool Fee for the Diesel Student Tool Set. This is attached as a \$1500 charge each term (Fall, Winter, and Spring). The charge is an embedded fee for their Diesel core class each term; therefore it is an "authorized" financial aid charge. Students on Financial Aid, Veterans programs, and other government financed school assistance programs do not need to file extra paperwork; all the fees are included in the course(s).

Linn-Benton Community College Heavy Equipment/Diesel students purchase a Snap-On toolbox (KRB2006FPQR) \$930.00; digital multimeter, (EEDM525F) \$430.00; and a Snap-On Student Excellence Program Premium Heavy Duty Set (SEPPREHD) \$8147.32.



LEARNING OUTCOMES

HOUSING OPTIONS

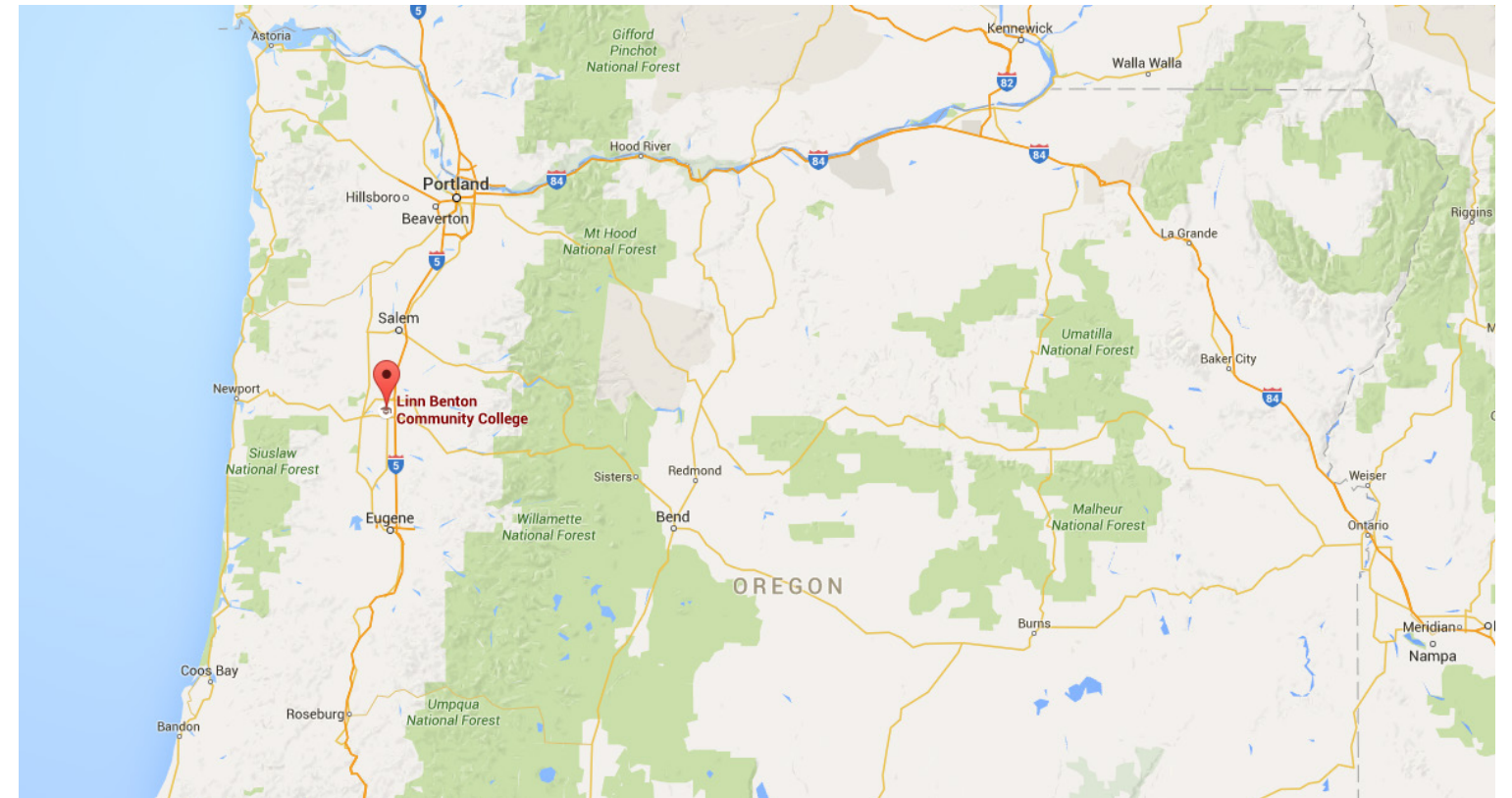
Students who successfully complete an Associate of Applied Science degree in Construction and Forestry Equipment Technology will:

- Understand superior customer service at a John Deere dealership
- Use Service Advisor and Electronic Parts Catalog
- Select, maintain, and store appropriate tools
- Inspect, maintain, remove, rebuild and replace John Deere engines, electrical, power train and hydraulic systems
- Follow safe practices



Program Director
Linn-Benton Community College
541-917-4506 (Tel)
6500 Pacific Blvd. SW
Albany, OR 97321
www.linnbenton.edu

CORPORATE PRODUCT SUPPORT DIR
Coastline Equipment
888-754-3381 (Tel)
562-272-7444 (Fax)
customersupport@coastlineequipment.com
6242 N. Paramount Blvd.
Building A
Long Beach, CA 90805
www.coastlineequipment.com



Linn-Benton
COMMUNITY COLLEGE

6500 Pacific Blvd. SW
Albany, Oregon 97321

Scan the QR Code for a list of housing options around Linn Benton Community College.



CONTACT INFORMATION



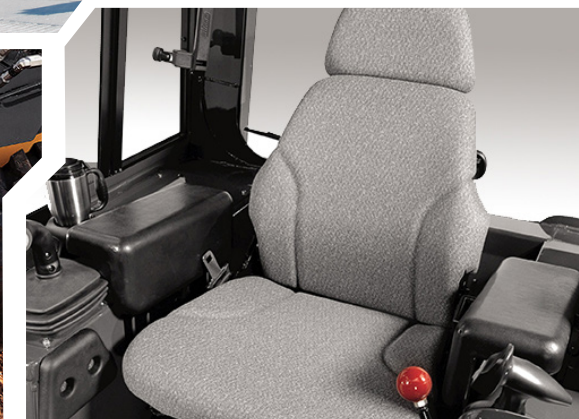
APPLICATION

Train to become a John Deere certified Construction and Forestry Technician

In just two years, you can earn your Associates Degree from Linn-Benton Community College, paid for by Coastline Equipment. Job placement opportunities in Southern & Central California, Idaho, and Nevada Coastline Equipment locations are available following successful completion of the C&F Tech programs.

- + Open to students 18 years and older
- + Opportunity for high earnings career
- + Enjoy job stability and increased demand for technicians

For more information, Contact Corporate Product Support Mgr 888-754-3381 or visit www.coastlineequipment.com/cf-tech-program/



Linn-Benton Community College Construction and Forestry Technology Sponsorship Application

Name _____
Last First MI

Have You Graduated High School _____ Graduation Date _____ Over 18 Years Old _____

Address _____

Home # _____ Cell # _____

E-mail _____

Thank you for taking the time to complete this application. Please return this application to:

Corporate Product Support Director
Coastline Equipment
6242 N. Paramount Blvd., Building A
Long Beach, CA 90805

Thank you for your interest in Coastline Equipment. We will contact you to set up an interview. Should you have any questions, you can contact Corporate Product Support Mgr at 888-754-338

Please explain why you are interested in this Program:

What are your long term goals?

COASTLINE EQUIPMENT

Linn-Benton Community College
Construction and Forestry Technology
Sponsorship Agreement

1. This Agreement is between the following parties:
 - a. Student: _____
 - b. Sponsor: Coastline Equipment
2. This Agreement defines and signifies mutual agreement upon the following terms and conditions for the Sponsorship of this Student into the Construction and Forestry Technology Program (C&F Tech Program) at Linn-Benton Community College.
3. Coastline agrees to sponsor this Student given the following considerations:
 - a. Student must maintain a 3.0 grade point average in the program and adhere to all academic policies, rules, and regulations.
 - b. Student will be required to pass all dealer required drug screening and driving certifications during any employment by Coastline.
 - c. Student will provide dealership with responsible and productive employment during Co-operative Work Experience (CWE), when and if available, each quarter-break and during the summer at a location specified by Coastline.
 - d. Student will be reimbursed for one half of the out of pocket tuition expenses during the 2-year program. Reimbursement will be provided upon receipt of quarterly tuition expenses, after completion of each term by Student. The remainder of the out of pocket tuition expenses will be reimbursed in four (4) installments following the 6 months, 12 months, 18 months, and 24 months anniversary of their full time employment with Coastline. The Student agrees to disclose to Coastline all sources of financial aid received during enrollment with Linn-Benton Community College, including loans.
 - e. Students have an opportunity to earn additional reimbursement at each term, this is based on the GPA of the term.
 $3.0-3.24 = \$500$ $3.25-3.49 = \$1,000$ $3.5-4.0 = \$1,500$
 - f. If Coastline does not, or is unable to offer Student employment upon graduation from the C&F Tech Program, the financial reimbursement will be suspended for a period of no more than 3 years, or until Student gains employment with Coastline, whichever occurs first.
 - g. If the Student enrolls and remains enrolled in a program to complete a 4-year degree, after completing the C&F Tech Program, Coastline will delay reimbursement until completion of a 4-year degree and Student starts employment at Coastline. Reimbursement schedule would follow as described in section 3.d.

What unique skills or abilities would you bring to the program?

If you are currently enrolled in school what classes have you taken in the last year?

Please explain your job history:

Of our locations in Long Beach, Oxnard, Bakersfield, Santa Maria, Meridian, Jerome, Elko, and Las Vegas, is there anywhere that you would not be able to relocate after completing your training?

4. The Student agrees to the following:
 - a. The Student will be paid \$15.50/per hour for CWE at the selected dealership location for and by Coastline.
 - b. The Student agrees to abide by all applicable company policies outlined in the Coastline Employee Handbook.
 - c. Student must complete, before graduating the C&F Tech Program, any manufacturer required service technician training for Levels 1 and 2. Failure to do so will disqualify Student for employment by Coastline and reimbursement.
 - d. Student must notify Coastline's Representative prior to making any adjustments to course schedule, after submission for tuition reimbursement.
5. Notice to Quit/Termination:
 - a. Should the Student decide to quit the C&F Tech Program before graduating or completing a 2-year term of employment, Student agrees to reimburse Coastline for any and all tuition paid on his/her behalf to complete this program.
6. No Guarantee of Employment:
 - a. Coastline does not guarantee employment either after completion of the C&F Tech Program or as part of the CWE.
7. Signatures below represent that the following parties mutually agree to this sponsorship agreement. I agree to this sponsorship arrangement as indicated by my signature below.

Student: _____ Date: _____
 STUDENT NAME - PRINTED

Student: _____ Date: _____
 STUDENT NAME - SIGNATURE

Company Representative: _____ Date: _____

VP/General Manager

Demand is High

With more and more service technicians facing retirement, the demand for new talent reaches peak levels.

800,000
 auto service technicians in the U.S.

175,000
 technicians employed in the collision repair industry

11,000
 collision repair technicians retire or leave the trade every year

60,000
 new technicians needed annually within the U.S. automobile industry

200,000
 jobs expected to become available over the next **20 years**



Dealer Competition is Fierce

John Deere and Coastline Equipment are looking for talented students interested in training to become John Deere Construction Equipment Technicians.

Get paid while you earn your Associates of Science Degree from Linn-Benton Community College.

Build a rewarding career with growth potential and job security as a John Deere technician.



JOHN DEERE

COASTLINE
Equipment

Headquarters
562-272-7400
6242 N. Paramount Blvd.
Building A
Long Beach, CA 90805
www.coastlineequipment.com

Linn-Benton
COMMUNITY COLLEGE

Admissions Office
541-917-4999
6500 Pacific Blvd. SW
Albany, Oregon 97321
www.linnbenton.edu